

COUNT	DESCRIPTION OF REVISIONS	BY	CHKD	DATE	COUNT	DESCRIPTION OF REVISIONS	BY	CHKD	DATE
△					△				
△					△				
△					△				

RECOMMEND PC BOARD HOLE PATTERN(MOUNTING SIDE)

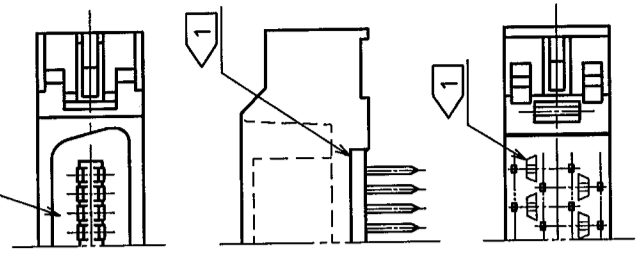
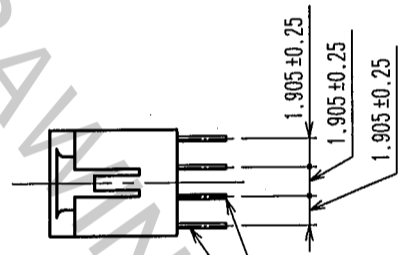
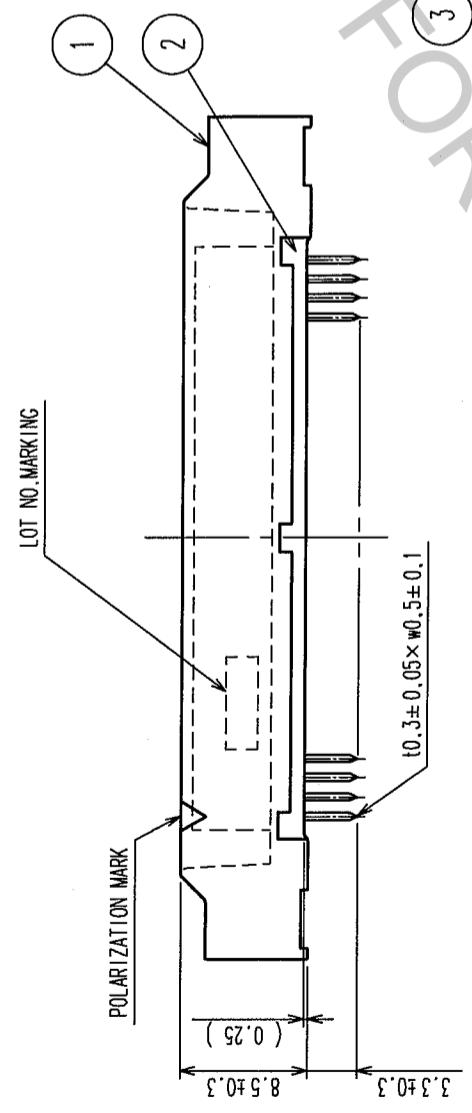
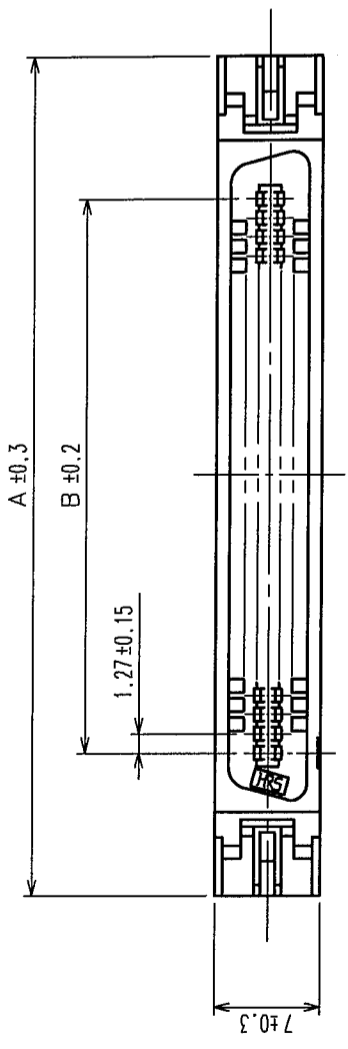
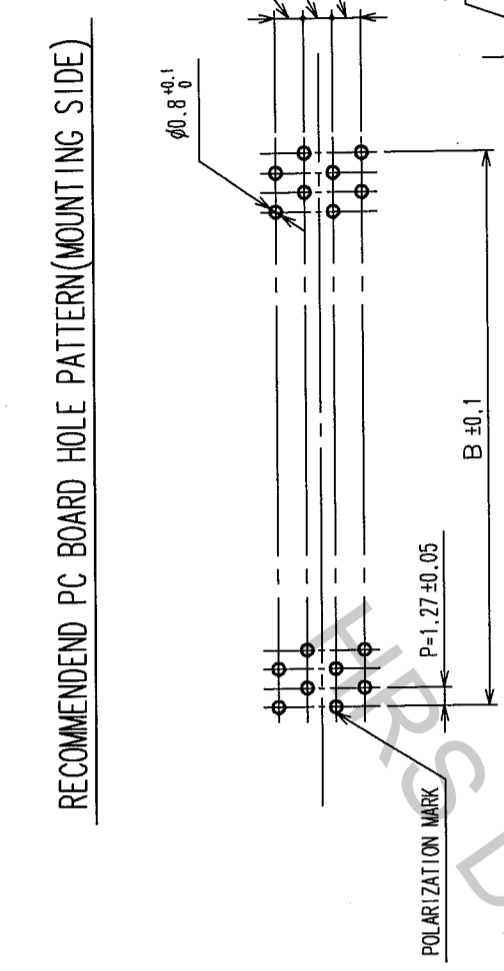


FIGURE 1

NOTES
 1 THE DESIGN OF 20 AND 32 POS. TYPES PARTIALLY DIFFERS AS SHOWN IN FIGURE1.
 2 THE DIMENSIONS IN PARENTHESES ARE FOR REFERENCE INDICATES VALUES FOR REFERENCE.
 3 NUMBER OF PIN.

PART NO.	CODE NO.	3	A	B
FX2B-20P-1.27DSA(71)	CL572-0801-4-71	20	30.33	11.43
FX2B-32P-1.27DSA(71)	CL572-0802-7-71	32	37.95	19.05
FX2B-40P-1.27DSA(71)	CL572-0803-0-71	40	43.03	24.13
FX2B-52P-1.27DSA(71)	CL572-0804-2-71	52	50.65	31.75
FX2B-60P-1.27DSA(71)	CL572-0805-5-71	60	55.73	36.83
FX2B-68P-1.27DSA(71)	CL572-0806-8-71	68	60.81	41.91
FX2B-80P-1.27DSA(71)	CL572-0807-0-71	80	68.43	49.53
FX2B-100P-1.27DSA(71)	CL572-0808-3-71	100	81.13	62.23

1, 2	POLYAMIDE	BLACK	UL94V-0	3	PHOSPHOR BRONZE	CONTACT AREA: GOLD 0.2 μm min DIP AREA: TIN-PLATING 2 μm min UNDER PLATING: NICKEL 2 μm min
NO.	MATERIAL	FINISH,	REMARKS	NO.	MATERIAL	FINISH, REMARKS
CODE NO. (OLD)	CL			DRAWN		APPROVED
				M. NAKAMOTO		H. Okawa
				04.09.09		04.09.09
DRAWING NO.	EDC3-082258-21		PART NO.	FX2B-**P-1.27DSA(71)		
SCALE	FREE		CODE NO.	CL572		
UNITS	mm					

TO
 PCK