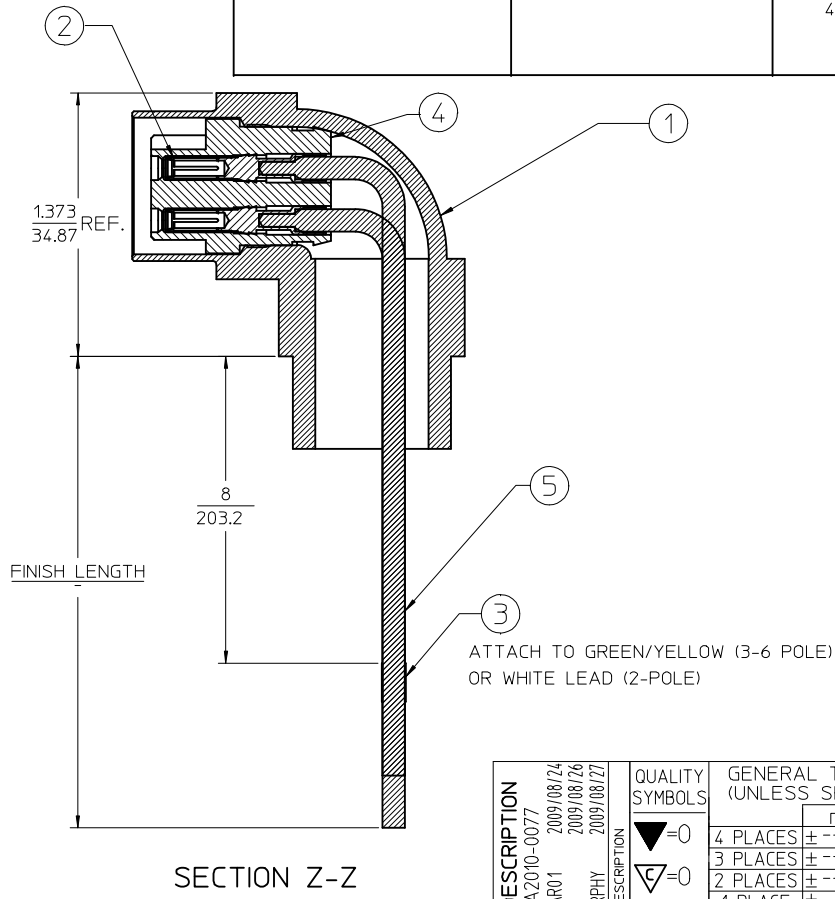
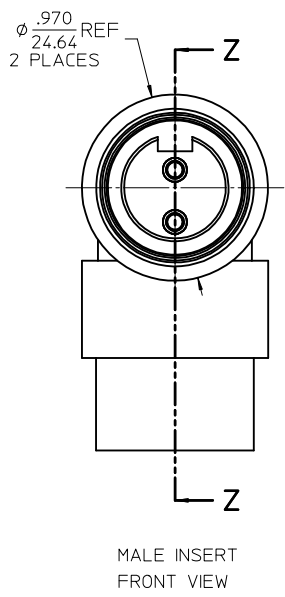
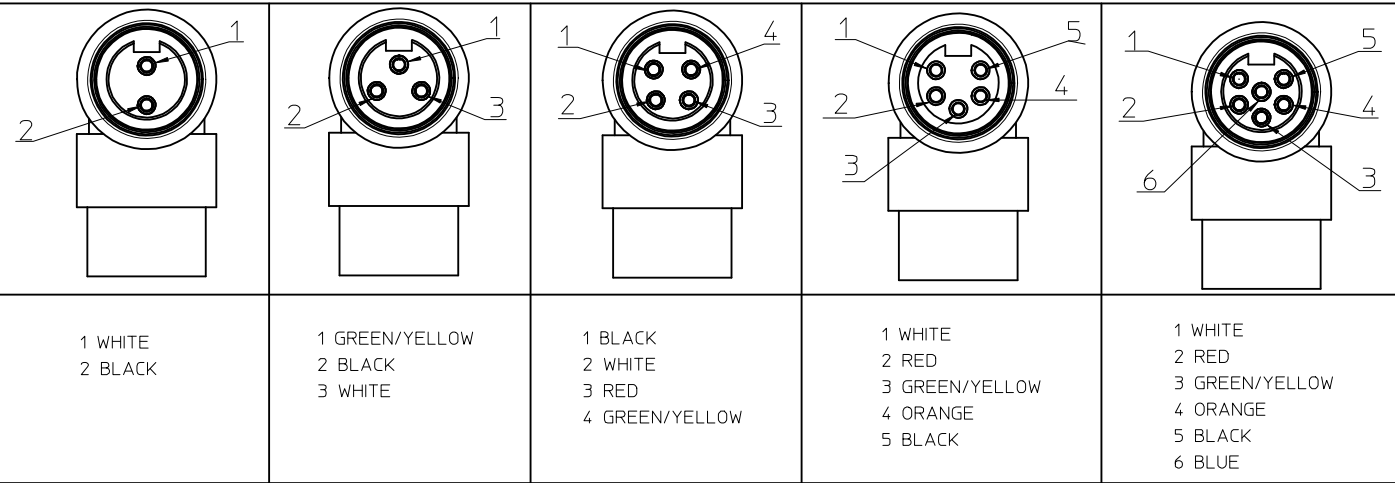


# FACE VIEW - FEMALE INSERT

## SCALE 1.5 : 1



FINAL ASSEMBLY  
1300130074

ENTER DESCRIPTION EC NO: MNA2010-0077 DRWN: NKUMAR01 CHKD: JF MURPHY APPR: JF MURPHY	2009/08/24 2009/08/26 2009/08/27	QUALITY SYMBOLS ▽=0 ▽=0	GENERAL TOLERANCES (UNLESS SPECIFIED)		DIMENSION STYLE IN/MM	SCALE 2:1	DESIGN UNITS INCH	THIRD ANGLE PROJECTION			
			mm	INCH	DRAWN BY NKUMAR01	DATE 21/08/09	TITLE MC 2P FR 12IN. 90D 16/1 PVC				
			4 PLACES ± ---	± ---	CHECKED BY BWOODMAN	DATE 21/08/09					
			3 PLACES ± ---	± ---	APPROVED BY JFMURPHY	DATE 2009/08/26	MATERIAL NO. <b>MOLEX INCORPORATED</b> DOCUMENT NO. <b>SD-130013-074</b>				
2 PLACES ± ---	± ---	ANGULAR ±1/2°		SEE SHEET 2		SHEET NO. 1 OF 2					
1 PLACE ± ---	± ---	DRAFT WHERE APPLICABLE MUST REMAIN WITHIN DIMENSIONS		THIS DRAWING CONTAINS INFORMATION THAT IS PROPRIETARY TO MOLEX INCORPORATED AND SHOULD NOT BE USED WITHOUT WRITTEN PERMISSION							

FEMALE 90° RECEPTACLE ASSEMBLY

SI. No.	DESCRIPTION	MATERIAL	FINISH	QUANTITY				
				2 POLE	3 POLE	4 POLE	5 POLE	6 POLE
1	MC RIGHT ANGEL SHELL 90DEG	ZINC DIECAST	BLACK E-COAT	1	1	1	1	1
2	SOCKET SLEEVE - TUBE	STAINLESS STEEL	PASSIVATED	2	3	4	5	6
3	LABEL	PLASTIC FILM	BLACK/YELLOW	1	1	1	1	1
	SOCKET CONTACT 16AWG	COPPER ALLOY	GOLD PLATED	2	3	4	5	6
4	2P MALE INSERT PVC A SIZE	PVC	YELLOW	1				
	3P MALE INSERT PVC A SIZE	PVC	YELLOW		1			
	4P MALE INSERT PVC A SIZE	PVC	YELLOW			1		
	5P MALE INSERT PVC A SIZE	PVC	YELLOW				1	
5	#16-1 WHT PVC WIRE UL1015	PVC JACKET	WHITE	1	1	1	1	1
	#16-1 RED PVC WIRE UL1015	PVC JACKET	RED			1	1	1
	#16-1 ORN PVC WIRE UL1015	PVC JACKET	ORANGE				1	1
	#16-1 GRN/YEL PVC WIRE UL1015	PVC JACKET	GREEN/YELLOW		1	1	1	1
	#16-1 BLU PVC WIRE UL1015	PVC JACKET	BLUE					1
	#16-1 BLK PVC WIRE UL1015	PVC JACKET	BLACK	1	1	1	1	1

PART NUMBER	DESCRIPTION	FINISHED LENGTH
1300130074	1R2005A20A120	12.0" +.75" -0 [0.3M +19.1MM -0]
1300130184	1R3005A20A120	12.0" +.75" -0 [0.3M +19.1MM -0]
1300130337	1R4005A20A120	12.0" +.75" -0 [0.3M +19.1MM -0]
1300130482	1R5005A20A120	12.0" +.75" -0 [0.3M +19.1MM -0]
1300130589	1R6005A20A120	12.0" +.75" -0 [0.3M +19.1MM -0]

POLE COUNT	MAX. VOLTAGE RATING	MAX. CURRENT RATING
2 POLE	600 VOLTS	13 AMPS
3 POLE	600 VOLTS	13 AMPS
4 POLE	600 VOLTS	10 AMPS
5 POLE	600 VOLTS	8 AMPS
6 POLE	600 VOLTS	8 AMPS

<b>ENTER DESCRIPTION</b> EC NO: MNA2010-0077 DRW: NKUMAR01 2009/08/24 CHKD: 2009/08/26 APPR: JFMURPHY 2009/08/27 REV: A	QUALITY SYMBOLS ▽=0 ▽=0	GENERAL TOLERANCES (UNLESS SPECIFIED)		DIMENSION STYLE IN/MM	SCALE 2:1	DESIGN UNITS INCH	THIRD ANGLE PROJECTION
		4 PLACES ± --- ± --- 3 PLACES ± --- ± --- 2 PLACES ± --- ± --- 1 PLACE ± --- ± ---	mm INCH ± --- ± --- ± --- ± --- ± --- ± ---	DRAWN BY NKUMAR01	DATE 21/08/09	TITLE MC 2P FR 12IN. 90D 16/1 PVC	
		ANGULAR ±1/2°		CHECKED BY BWOODMAN	DATE 21/08/09		
		DRAFT WHERE APPLICABLE MUST REMAIN WITHIN DIMENSIONS		APPROVED BY JFMURPHY	DATE 2009/08/26	MATERIAL NO. SEE TABLE	

