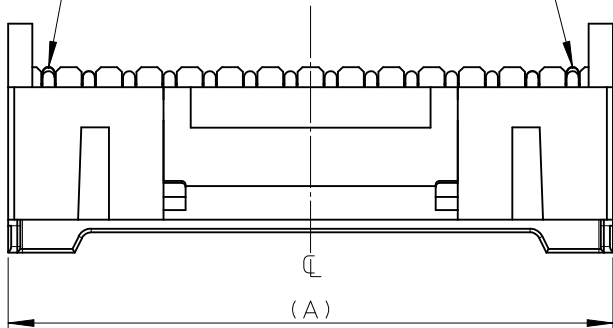


CIRCUIT No.1

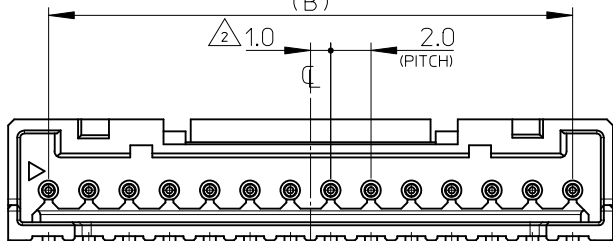
CIRCUIT No.N

①



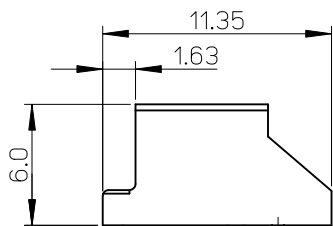
(A)

(B)



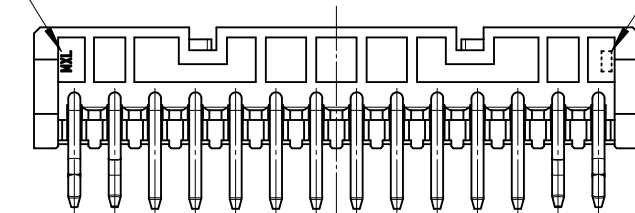
1.0

2.0 (PITCH)



TRADE MARK

CAV. & MOLD No.



③ ④ キング形状 ①  
KINK FORM

②

③ ④ キング形状 Ⅱ  
KINK FORM

③ ④ キング形状 Ⅰ  
KINK FORM

③ ④ キング形状 ①  
KINK FORM

∅0.6

③ ④ キング形状 Ⅱ  
KINK FORM

③ ④ キング形状 ①  
KINK FORM

28	32	503660	-1510	15	503660-**10 ボス無(WITHOUT BOSS)
26	30		-1410	14	
22	26		-1210	12	
18	22		-1010	10	
14	18		-0810	8	
10	14		-0610	6	
8	12		-0510	5	
6	10	503660	-0410	4	
B	A	TRAY PACKAGE	ORDER NO.	CIRCUIT	CONNECTOR SERIES No.

No.	部品 PART	材質 MATERIAL
①	ハウジング HOUSING	ポリエステル(PBT), ガラス充填, UL94V-0 POLYESTER, GLASS FILLED, UL94V-0 色: ナチュラル(白) COLOR: NATURAL (WHITE)
②	ピン PIN	黄銅, 錫めっき BRASS, Sn PLATED


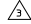


REVISED  
EC NO.: J2012-0117  
DRWN:SSAT002 2011/07/25  
CHKD:KASAKAWA 2011/07/25  
APPR:NUKITA 2011/07/29

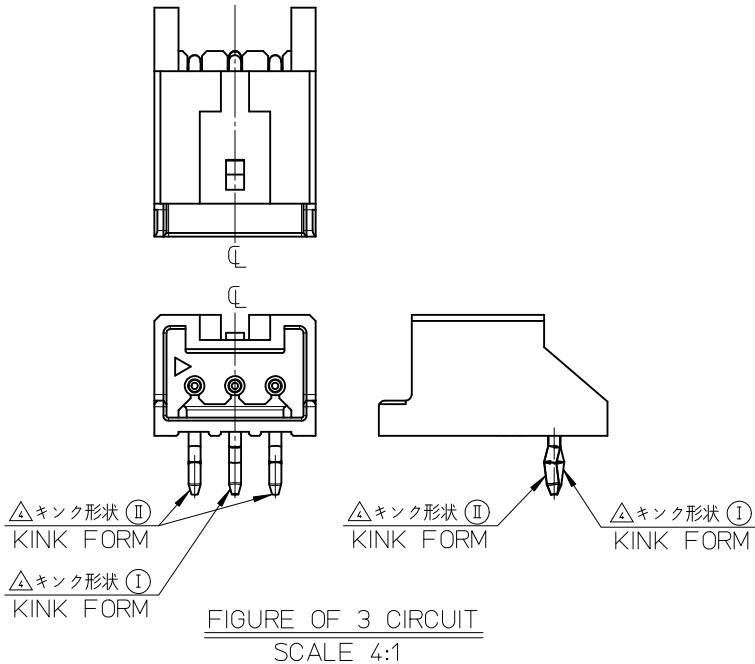
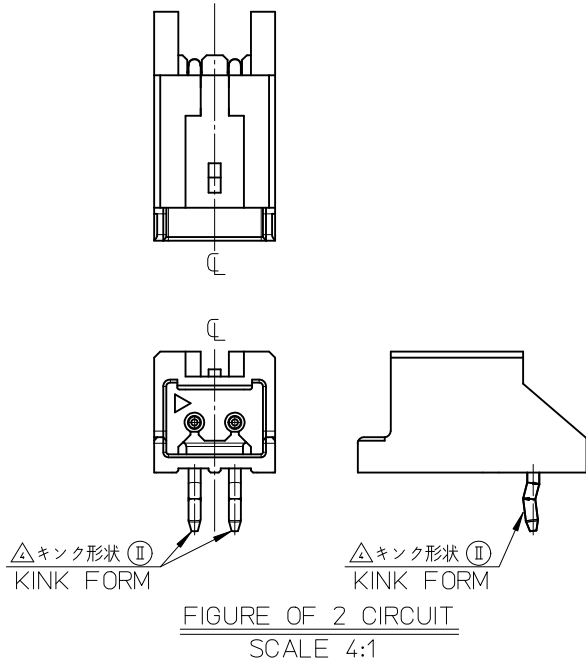
GENERAL TOLERANCES (UNLESS SPECIFIED)	
10 UNDER	±0.2
10 OVER 30 UNDER	±0.25
30 OVER	±0.3
ANGULAR	±1 °
DRAFT WHERE APPLICABLE MUST REMAIN WITHIN DIMENSIONS	

DIMENSION STYLE		SCALE	DESIGN UNITS
MM ONLY		4:1	METRIC
DRAWN BY	DATE	TITLE	
SSAT002	2010/08/06	2.0 W/B CONN. SINGLE DIP R/A PLUG HS'G ASS'Y WITHOUT BOSS	
CHECKED BY	DATE	MOLEX INCORPORATED	
KASAKAWA	2010/08/16	SD-503660-001	
APPROVED BY	DATE	SHEET NO.	
NUKITA	2010/08/16	1 OF 3	
MATERIAL NO.	SEE CHART	THIS DRAWING CONTAINS INFORMATION THAT IS PROPRIETARY TO MOLEX INCORPORATED AND SHOULD NOT BE USED WITHOUT WRITTEN PERMISSION	

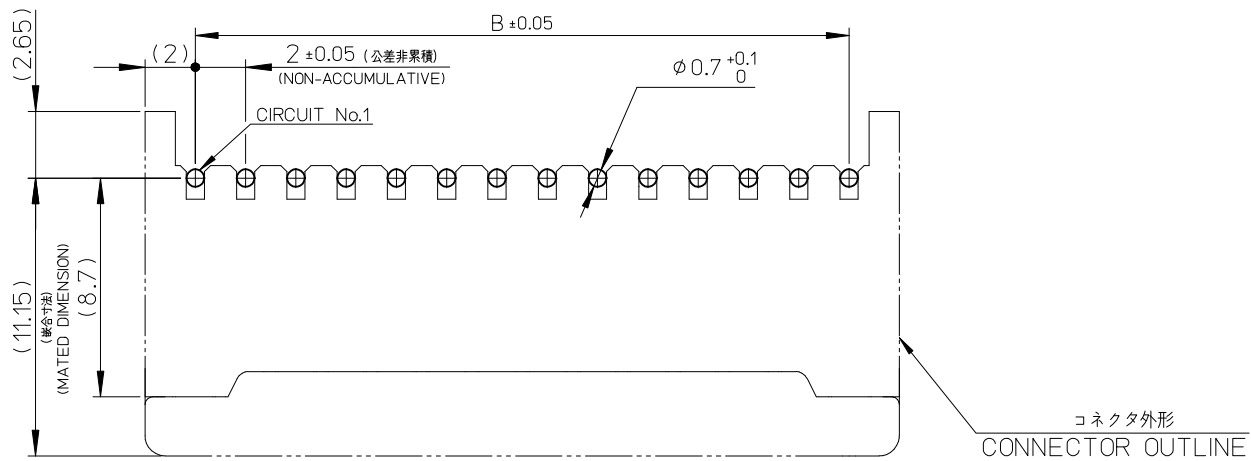
THIRD ANGLE PROJECTION	
MATERIAL NO. DOCUMENT NO.	

NOTES:

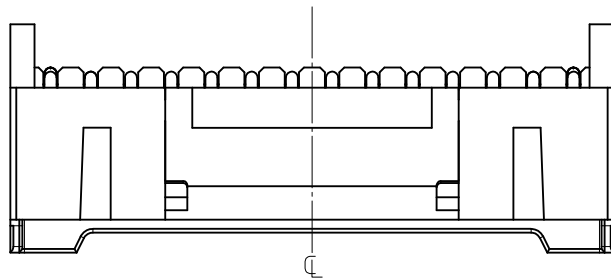
1. 嵌合相手: 503658 シリーズ  
MATE WITH: 503658 SERIES.
2.  偶数極に適用。  
APPLY FOR EVEN CIRCUIT.
3.  キンクは両端2ピンに付加。  
KINK ATTACHED TO THE POSITION OF 2PINS TO BOTH OUTSIDE ENDS.
4.  2極以外のキンク形状は両サイドが①、それ以外のキンク形状は全て②形状とする。  
3極のキンク形状は両サイドに①、2ピン目に②形状を付加する。  
MORE THAN 2 CIRCUIT : PINS AT BOTH ENDS ARE KINK FORMED TO ①  
THE OTHER PINS ARE KINK FORMED TO ②  
3 CIRCUIT : PINS AT BOTH ENDS ARE KINK FORMED TO ①  
THE OTHER PINS ARE KINK FORMED TO ②
5.  トレードマーク: MXLにて表示。  
キャビティー番号: 1桁から2桁の数字にて表示。 金型番号: アルファベット1文字にて表示。  
TRADE MARK IS FORMED BY MXL.  
AND BY 1 - 2 DIGIT NUMBER (TO CAVITY No.)  
AND BY 1 LETTER OF ALPHABET (TO MOLD No.)
6. 本製品のプラスチック部に黒点等が確認される場合や、色合いが異なる場合がございますが、製品性能に影響は御座いません。  
THERE IS NO INFLUENCE IN THE PRODUCT PERFORMANCE THOUGH THE BLACK SPOT ETC.  
MIGHT BE CONFIRMED TO THE PLASTIC PART OF THIS PRODUCT AND  
THE SHADE MIGHT BE DIFFERENT.
7. 製品の取り扱いについては、コネクタ取扱説明書(AS-503658-001)を参照願います。  
PLEASE REFER TO INSTRUCTION MANUAL(AS-503658-001)
8. ELV及びRoHS適合品  
ELV AND RoHS COMPLIANT



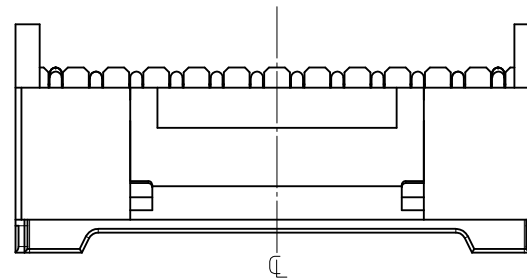
REVISED EC NO.: J2012-0117 DRWN:SSATO02 CHKD:KASAKAWA APPR:NUKITA 2011/07/25 2011/07/25 2011/07/29	GENERAL TOLERANCES (UNLESS SPECIFIED)		DIMENSION STYLE MM ONLY	SCALE 4:1	DESIGN UNITS METRIC	THIRD ANGLE PROJECTION	
	10 UNDER	±0.2	DRAWN BY SSATO02	DATE 2010/08/06	TITLE 2.0 W/B CONN. SINGLE DIP R/A PLUG HS'G ASS'Y WITHOUT BOSS		
	10 OVER 30 UNDER	±0.25	CHECKED BY KASAKAWA	DATE 2010/08/16	MOLEX INCORPORATED		
	30 OVER	±0.3	APPROVED BY NUKITA	DATE 2010/08/16	DOCUMENT NO. SD-503660-001		
REV B	DESCRIPTION	ANGULAR ±1 ° DRAFT WHERE APPLICABLE MUST REMAIN WITHIN DIMENSIONS	MATERIAL NO. SEE SHEET1	SIZE A3	SHEET NO. 2 OF 3		



基板取付穴推奨寸法 (マウント面)  
 RECOMMENDED P.C.BOARD  
 HOLE DIMENSION  
 (MOUNTING SIDE)  
 (t=1.2~1.6)



ロック面 14,15極形状  
 LOCK SIDE SHAPE OF 14,15CKT.



ロック面 4,5,6,8,10,12極形状  
 LOCK SIDE SHAPE OF 4,5,6,8,10,12CKT.

PROPOSED EC NO: J2012-0117 DRWN:SSAT002 CHKD:KASAKAWA APPR:NUKITA	2011/07/25 2011/07/25 2011/07/29	GENERAL TOLERANCES (UNLESS SPECIFIED)		DIMENSION STYLE MM ONLY		SCALE 4:1	DESIGN UNITS METRIC	THIRD ANGLE PROJECTION	
		10 UNDER	± 0.2	DRAWN BY SSAT002	DATE 2010/08/06	TITLE 2.0 W/B CONN. SINGLE DIP R/A PLUG HS'G ASS'Y WITHOUT BOSS			
		10 OVER 30 UNDER	± 0.25	CHECKED BY KASAKAWA	DATE 2010/08/16				
		30 OVER	± 0.3	APPROVED BY NUKITA	DATE 2010/08/16	MOLEX INCORPORATED			
ANGULAR	± 1 °	DRAFT WHERE APPLICABLE MUST REMAIN WITHIN DIMENSIONS		MATERIAL NO. SEE SHEET 1		DOCUMENT NO. SD-503660-001	SHEET NO. 3 OF 3		
REV		SIZE A3		THIS DRAWING CONTAINS INFORMATION THAT IS PROPRIETARY TO MOLEX INCORPORATED AND SHOULD NOT BE USED WITHOUT WRITTEN PERMISSION					