

ATLANTIC VERSION TERMINATOR INTERFACE ADAPTER	PART NUMBER	REVISION	DESCRIPTION	FEED TYPE	APPLICATOR STYLE CONVERSION CHART							
					CONVERT TO	PART NUMBERS REQUIRED						
	2151518-1	B	FINE CRIMP HEIGHT ADJUST	MECHANICAL	PNEUMATIC FEED	2119950-1	1338685-1	5-18022-5	2119641-1	2119799-1	2063440-1	
					SERVO LATCH PLATE	2119951-1	-	8-2151518-5	1901094-3	1-1752354-9	2168400-6 (QUANTITY 2)	
					SMART APPLICATOR	2161326-1	-	8-2151518-4	-	-	-	
	2151518-2	B	FINE CRIMP HEIGHT ADJUST	PNEUMATIC	MECHANICAL FEED	2119949-1	1338685-1	5-18022-5	2119653-1	-	-	
					SERVO LATCH PLATE	2119951-1	-	8-2151518-5	1901094-3	1-1752354-9	2168400-6 (QUANTITY 2)	
					SMART APPLICATOR	2161326-1	-	8-2151518-4	-	-	-	
	2151518-5	B	FINE CRIMP HEIGHT ADJUST	SERVO LATCH PLATE	MECHANICAL FEED	2119949-1	1338685-1	5-18022-5	2119653-1	-	-	
					PNEUMATIC FEED	2119950-1	1338685-1	5-18022-5	2119641-1	2119799-1	2063440-1	
	2151518-6	B	NON-CRIMP HEIGHT ADJUST	SERVO LATCH PLATE	-	-	-	-	-	-	-	
	2151518-7	B	FINE CRIMP HEIGHT ADJUST		NONE	-	-	-	-	-	-	
	7-2151518-7	B	CRIMP TOOLING KIT	-	-	-	-	-	-	-	-	

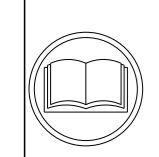
CRIMP	SIZE	TYPE
WIRE	1.40 mm [.055]	F
INSUL	3.30 mm [.130]	O

APPLICATOR INSTRUCTIONS 408-10389

TERMINAL DATA: TE TERMINAL	TE CRIMP SPECIFICATION
TERMINAL NAME: HPF 1.5 MM	SENSORKONTACT
WIRE STRIP LENGTH 3.75-4.05 mm [1.48-.159 IN]	INSULATION DIAMETER RANGE 2.60mm [1.102 IN] MAX
TERMINAL APPLICATION SPECIFICATION 114-18912	

TE TERMINAL	TE TERMINAL	TE SEAL	TE SEAL	INSULATION RANGE
1563621-2	964971-1	964971-1	964971-1	Ø1.2-1.6mm
2208363-3	967067-2	967067-2	967067-2	Ø0.9-1.4mm

WIRE SIZE	CRIMP HEIGHT mm [INCH]	CRIMP HEIGHT REFERENCE SETTING
0.35mm2	0.89+/-0.03 [.035+/- .001]	8.2



- 1 RECOMMENDED SPARE PARTS
- 2 GREASE BEARING SURFACES LIGHTLY
- 3 LUBRICATE DAILY PER THE APPLICATOR INSTRUCTION SHEET SUPPLIED WITH THE APPLICATOR.
- 4 APPLICATOR SPECIFIC DATA TO BE ENTERED INTO BLANK MEMORY CHIP AT ASSEMBLY. SEE BELOW FOR PART NUMBER:
 - MECHANICAL FEED WITH "SMART APPLICATOR" CONVERSION: 8-2151518-4
 - PNEUMATIC FEED WITH "SMART APPLICATOR" CONVERSION: 8-2151518-4
 - SERVO FEED WITH "FINE CRIMP HEIGHT ADJUST": 8-2151518-5
 - SERVO FEED WITH "NON-CRIMP HEIGHT ADJUST": 8-2151518-6
- 5 ADJUSTMENT OF THE STRIPPER MAY BE REQUIRED WHEN MOVING THE APPLICATOR BETWEEN BENCH AND LEADMAKER APPLICATIONS.
- 6 APPLY PART NUMBER 1-23419-5 LOCTITE TO THREADS OF ITEMS 62, 180. APPLY PART NUMBER 2-23419-6 LOCTITE TO THREADS OF ITEMS 242. FOR -6 ONLY APPLY PART NUMBER 1-23419-5 LOCTITE TO THREADS OF ITEMS 37, 180.
- 7 GREASE THREADS, GROOVE AND O-RING ON ITEMS 35 & 252.
- 8 MAGNET, ITEM 166 MUST BE ORIENTED CORRECTLY IN ORDER TO PROPERLY ACTUATE THE COUNTER.
- 9 CRIMP HEIGHT REFERENCE SETTING WAS THE SETTING USED WHEN THE APPLICATOR WAS QUALIFIED AT THE FACTORY. ADJUSTMENT MAY BE NECESSARY WHEN RUNNING APPLICATOR IN THE FIELD.
- 10 SPARE FEED CAM STORAGE LOCATION REFER TO INSTRUCTION SHEET FOR ADDITIONAL INFORMATION.
- 11 TO CONVERT THE APPLICATOR TO A NON-CARRIER CUTTING STYLE, REMOVE ITEM 13 AND ATTACH TO THE LOCATION ON THE BACK SIDE OF THE HOUSING. REFER TO INSTRUCTION SHEET FOR ADDITIONAL INFORMATION.
- 12 WHEN ASSEMBLING A NON CRIMP HEIGHT ADJUST APPLICATOR (-6) USE SHIMS FROM ITEM 260 TO ACHIEVE A NOMINAL SHIM HEIGHT OF 4.91.
- 13 THIS APPLICATOR APPLIES TERMINAL WITH A SEAL. INSULATION DIA QUOTED IS OUTSIDE DIAMETER OF SEAL. WIER INS. DIA IS DEPENDENT ON SEAL BEING APPLIED. SEAL PN 964971-1 INS. DIA RANGE IS 1.2-1.6mm.
- 14 APPLY TORQ-SEAL IN ALLEN SOCKET TO FILL HOLE AFTER FLAT HD HAS BEEN ADJUSTED TO CORRECT HEIGHT AT QUALIFICATION. APPLY #1-23419-5 LOC-TITE TO THREADS.
- 15 TERMINAL LUBRICANT IS RECOMMENDED.

*WARNING
 ON INSTALLATION, SET WIRE DISC, ITEM 40 TO LARGEST WIRE SIZE SETTING. USE OF SETTINGS BELOW MINIMUM REQUIRED CRIMP HEIGHT SETTING WILL CAUSE DAMAGE TO CRIMP TOOLING.

-	-	1	-	-	-	2119957-2	APPLICATOR SHIM PACK	260
-	1	-	1	1	1	8-21084-0	O-RING, .676 ID, .070 DIA. MAT.	252
-	-	-	-	1	-	2119640-1	PUSH ROD, AIR FEED	250
-	-	-	-	1	-	2079988-1	BUSHING, LCH5-12, MISUMI	249
-	-	-	-	1	-	2119641-1	FEED CAM, AIR FEED	248
-	1	-	1	1	1	2119798-1	DETENT PIN	247
-	1	-	1	1	1	1-22279-3	SPRING, COMPRESSION	246
-77	-7	-6	-5	-2	-1	PART NO	DESCRIPTION	ITEM NO

ATLANTIC VERSION
 Shown on sheets 1 of 4 & 2 of 4
 (Pacific version shown on sheets 3 of 4 & 4 of 4)

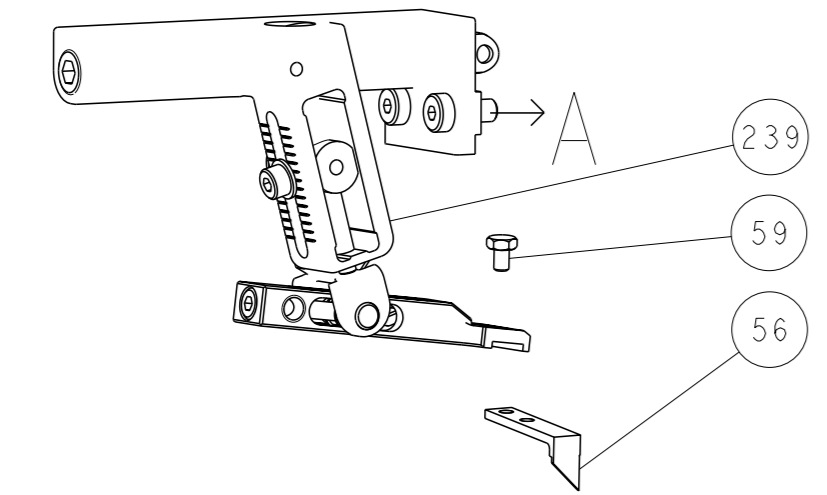
SET UP GAUGE 2119599-1	LOC A	DIST 66	REVISIONS			
			#	DATE	BY	REV
			A	RELEASE		LZ
			A1	ECR-14-008966	18APR2013	JH TE
			B	ECR-16-010808	27JUL2016	JH CT

-	-	1	-	-	-	2119758-1	RAM, AMP STYLE, SIDE FEED, NON-ADJ.	245
-	1	1	1	1	1	2119082-8	CAM, SNAIL, INSULATION ADJUSTMENT	244
-	1	1	1	1	1	2079764-1	WASHER, WAVE SPRING, CREST-TO-CREST	243
-	1	1	1	1	1	2119083-1	RETAINER, INSULATION DIAL	242
-	1	1	1	1	1	7-18023-7	SCR, SKT HD CAP M3 X 4.0	241
-	-	2	2	-	-	2168400-6	SHCS, LOW HEAD, RoHS, M5 X 16	240
-	-	-	-	-	1	2119580-1	MECHANICAL FEED ASSEMBLY	239
-	-	-	-	1	-	2063440-1	AIR FEED MODULE	238
-	-	1	1	-	-	2119740-2	TAG, IDENTIFICATION	213
-	-	1	1	-	-	1901094-3	SPACER, FEEDER	198
-	1	1	1	1	1	1-1752354-9	STANDOFF, HOLD-DOWN	180
-	1	1	1	1	1	6-993111-6	PIN, SLOTTED SPRING 3.0 X 14.0	177
-	1	1	1	1	1	8-22280-7	SPRING, COMPRESSION	176
-	1	1	1	1	1	1752353-2	GUIDE PIN, HOLDDOWN	175
-	1	1	1	1	1	1901680-2	GUIDE PIN, HOLDDOWN	174
-	-	-	-	2	-	21045-3	RING, RETAIN, EXTERN, 3/16 CRESCENT	172
-	1	1	1	1	1	994969-1	MAGNET, RARE EARTH HIGH ENERGY	166
-	REF	REF	REF	REF	REF	994970-2	COUNTER, MAGNETIC	164
-	-	-	-	1	-	240638-1	SPRING, FEED FINGER	163
-	-	-	-	1	-	3-23627-7	PIN, RETAIN, GRVD, 3/16 X .854	137
-	-	-	-	1	-	2119799-1	HOLDER, FEED FINGER, AF	136
-	-	REF	REF	-	-	SEE NOTE 4	MEMORY CHIP, PROGRAMMED	135
-	-	1	1	-	-	1633743-1	SERVO FEED LATCH ASM	133
-	1	1	1	1	1	1-18028-2	WASHER, FLAT, REG M4	119
-	-	REF	REF	-	-	2119944-1	FEED FINGER ASSEMBLY, SF	117
-	1	1	1	1	1	2119955-1	ASSY, LUBRICATOR, SIDE FEED	113
-	1	1	1	1	1	455888-7	SPACER, CRIMPER	82
-	1	1	1	1	1	2119956-1	DOCUMENTATION PACKAGE	71
-	1	-	-	1	1	2119740-1	TAG, IDENTIFICATION	67
-	2	2	2	2	2	2168078-1	SCREW, DRIVE, RH, RoHS, 2 x .188	66
-	1	-	-	1	1	2119793-1	LIMITER, ADJUSTMENT BOLT	63
-	3	-	3	3	3	992763-5	SCR, SET, SOC, CONE POINT, M3 x 4.0	62
-	1	1	1	1	1	2079383-4	SCR, BHSC, RoHS (M4 X 8)	60
-	-	-	-	1	1	5-18022-5	SCR, HEX HD CAP, M4 X 6.0	59
-	1	1	1	1	1	985575-3	SCR, FLT SKT HD CAP M3 X 10.0	57
-	-	-	-	1	1	1338685-1	PAWL, FEED	56
-	4	4	4	4	4	2168400-1	SHCS, LOW HEAD, RoHS, M4 X 12	54
-	1	1	1	1	1	1-5018030-0	NUT, HEX, REG, RoHS, M3.5	52
-	1	1	1	1	1	1901681-5	HOLDDOWN, TERMINAL	51
-	-	-	-	1	2	18023-9	SCR, SKT HD CAP M4 X 6.0	49
-	-	-	-	-	1	2119652-1	FEED CAM, PRE FEED	48
-	-	-	-	-	1	2119653-1	FEED CAM, POST FEED	47
-	1	1	1	1	1	2119656-9	APPLICATOR BASIC ASSEMBLY, SF	46
-	1	-	-	1	1	2119370-1	RAM, AMP STYLE, SIDE FEED	44
-	1	1	1	1	1	2079383-7	SCR, BHSC, RoHS (M8 X 25)	41
-	1	-	-	1	1	2119645-1	DISC, NUMBERED FA WIRE ADJUSTMENT	40
-	1	-	-	1	1	2119957-1	APPLICATOR SHIM PACK	39
-	1	1	1	1	1	2119644-1	RAM WASHER, PRECISION	38
-	1	1	1	1	1	2119085-1	FA HEAD, ATLANTIC STYLE	37
-	1	-	-	1	1	2119092-1	BOLT, ADJUSTMENT	35
-	1	1	1	1	1	1752356-6	SUPPORT, TERMINAL	34
-	2	2	2	2	2	2079383-5	SCR, BHSC, RoHS (M4 X 20)	33
-	1	1	1	1	1	2161328-1	HEX HEAD, FLANGED, M5 x 8mm LONG	32
-	1	1	1	1	1	1-1320908-0	SPACER, STRIP GUIDE	30
-	1	1	1	1	1	2119959-1	ASSEMBLY, STRIP GUIDE	29
-	1	1	1	1	1	455888-3	SPACER, CRIMPER	28
-	1	1	1	1	1	1320928-2	STRIP GUIDE	24
-	1	1	1	1	1	2168083-2	SCR, SKT HD CAP, RoHS, M4 X 8.0	21
-	1	1	1	1	1	1-18028-2	WASHER, FLAT, REG M4	20
-	1	1	1	1	1	2119533-1	STRIPPER, SIDE FEED	19
-	1	1	1	1	1	2119806-1	INSERT, SHEAR	13
-	1	1	1	1	1	3-22280-3	SPRING, COMPRESSION	12
-	1	1	1	1	1	1-356885-4	STOP, SHEAR	11
-	1	1	1	1	1	2119805-1	SHEAR HOLDER, FRONT	10
-	1	1	1	1	1	318707-1	FLOATING SHEAR, FRONT	9
-	1	1	1	1	1	1333332-1	ANVIL, COMBINATION, SPECIAL	8
-	-	-	-	-	-	-	-	7
-	-	-	-	-	-	-	-	6
-	1	1	1	1	1	2119781-1	DEPRESSOR, SHEAR	5
-	1	1	1	1	1	238011-4	BLOCK, CRIMPER SPACER	4
-	1	1	1	1	1	2-1633996-7	CRIMPER, INSULATION SPECIAL	3
-	1	1	1	1	1	1-455888-3	SPACER, CRIMPER	2
-	1	1	1	1	1	5-1633860-6	CRIMPER, WIRE	1
-77	-7	-6	-5	-2	-1	PART NO	DESCRIPTION	ITEM NO

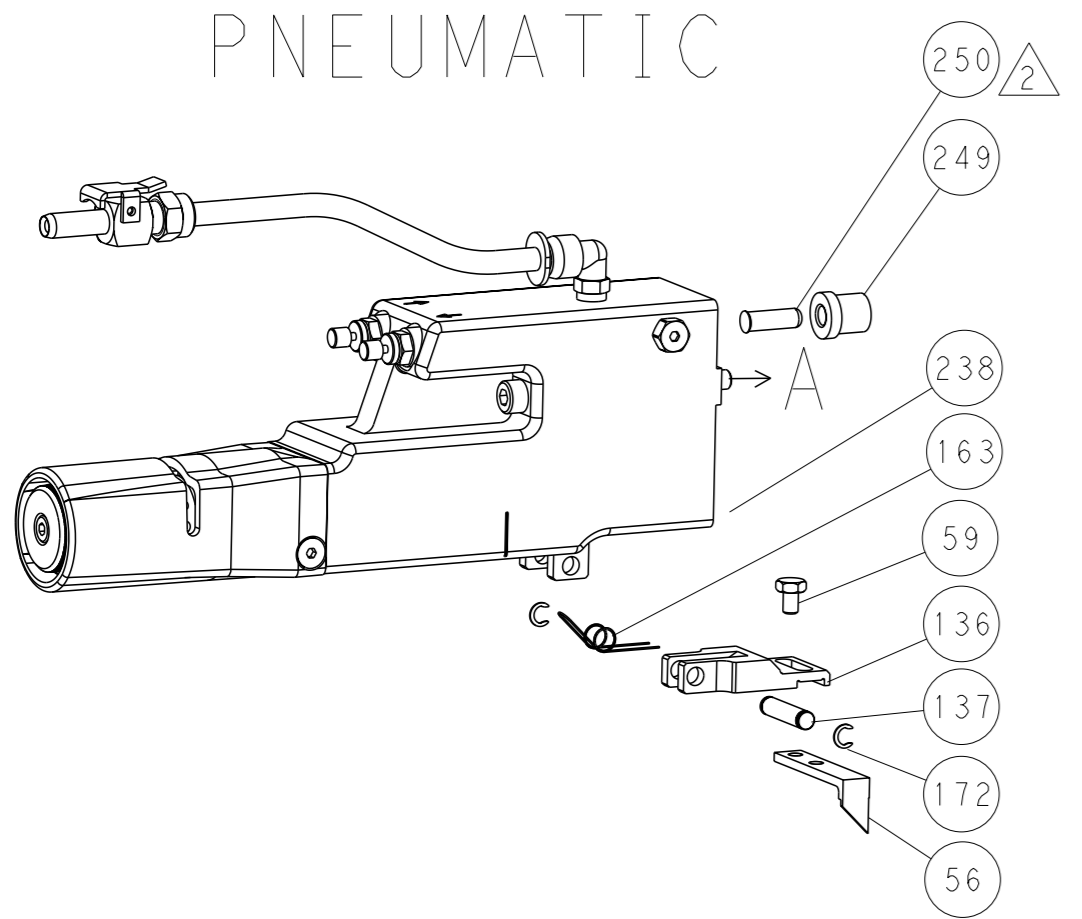
DIMENSIONS: mm		TOLERANCES UNLESS OTHERWISE SPECIFIED:		OWN: X. ZHAO 14MAR2013		DATE: 14MAR2013	
mm		0 PLC ±		CHK: L. ZHANG 14MAR2013		NAME: Ocean Side Feed Applicator	
mm		1 PLC ±		APVD: L. ZHANG 14MAR2013		PRODUCT SPEC	
mm		3 PLC ±		APPLICATION SPEC		SIZE: A1	
mm		4 PLC ±		WEIGHT		CAGE CODE: 00779	
mm		ANGLES FINISH		RESTRICTED TO		DRAWING NO: 2151518	
MATERIAL				Customer Accessible Production Drawing		SCALE: 1:2 SHEET 1 of 4 REV B	

REVISONS		DATE	OWN	APVD
P	LYR			
SEE SHEET 1				

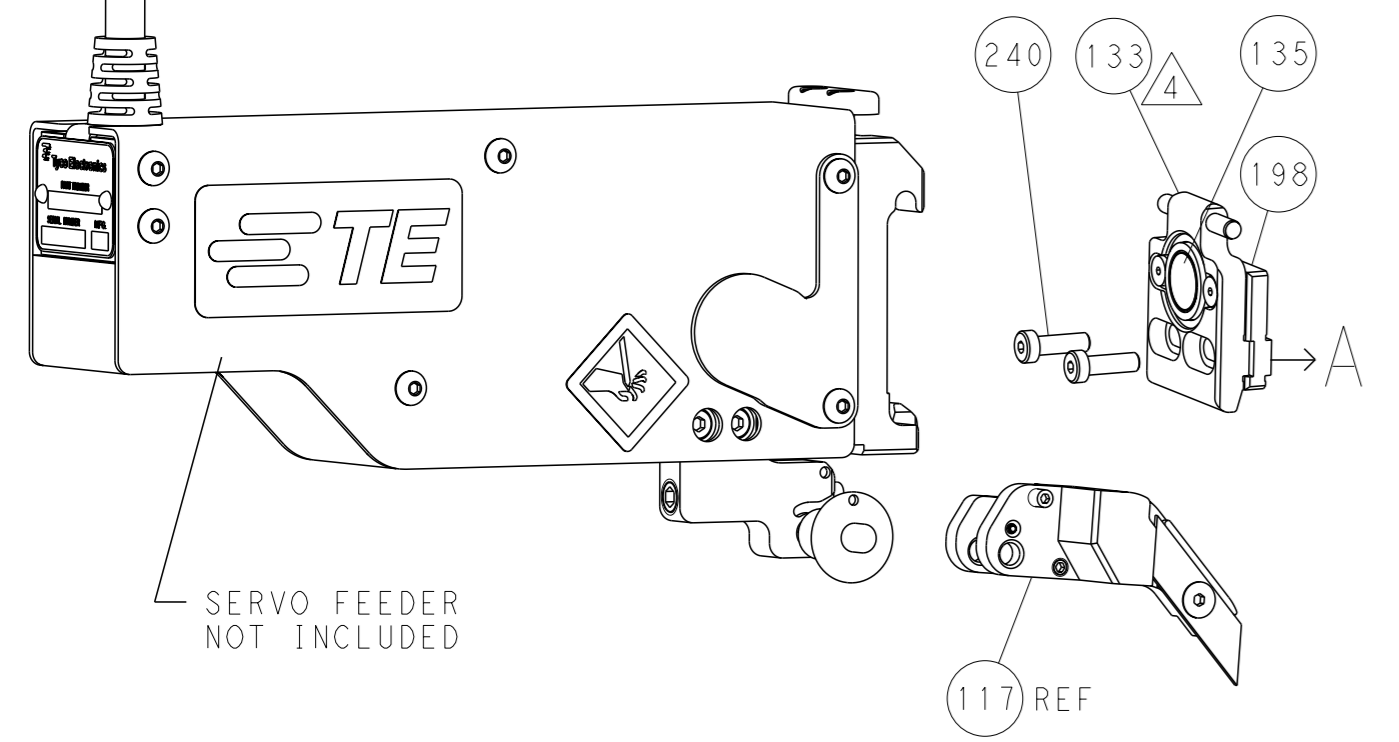
FEED TYPE MECHANICAL



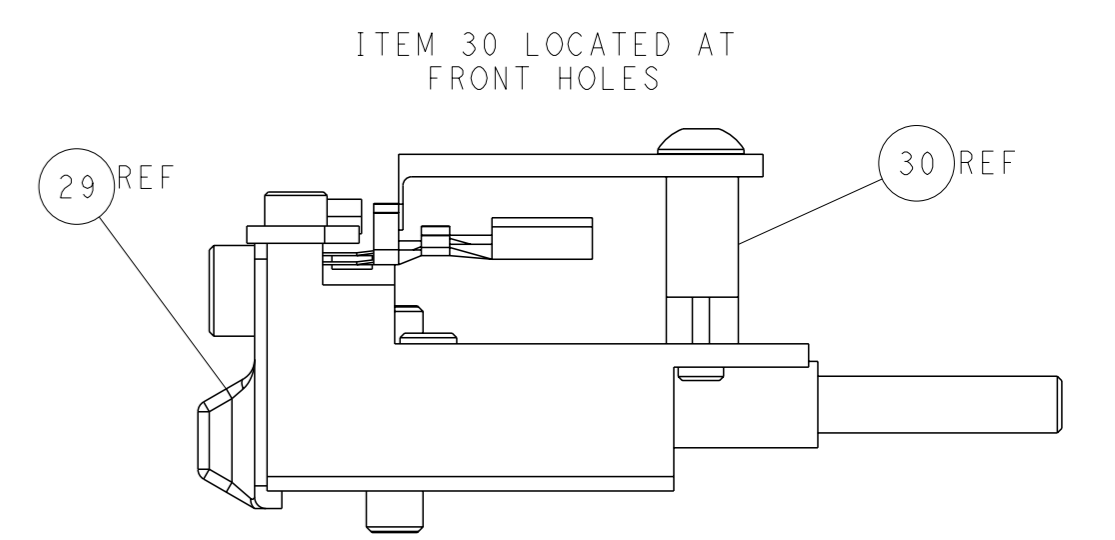
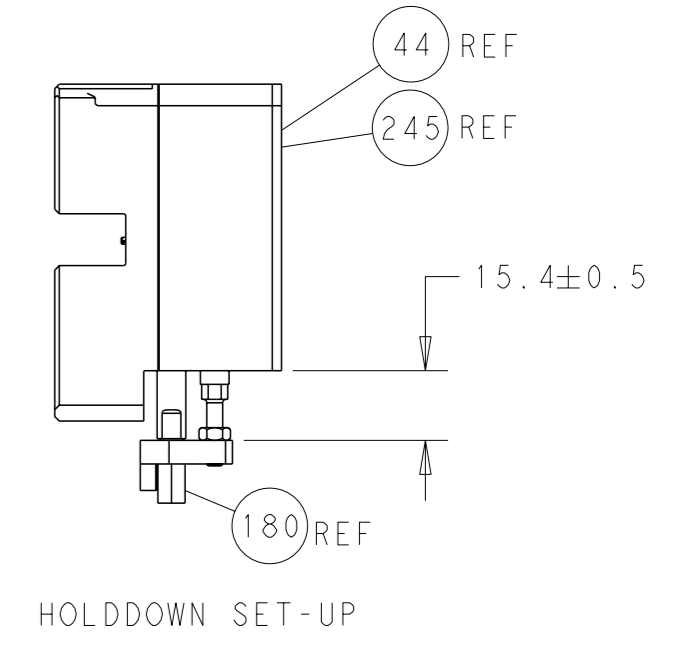
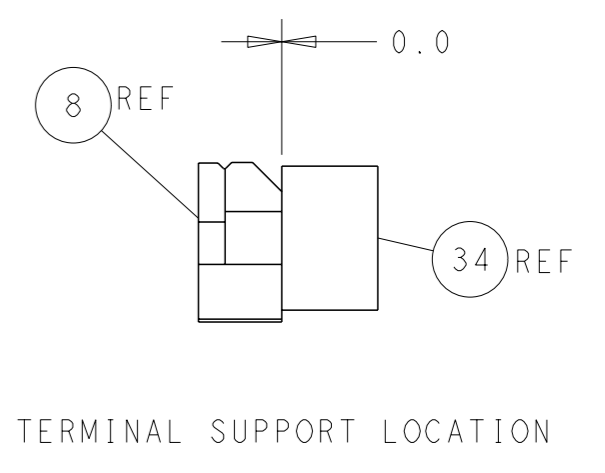
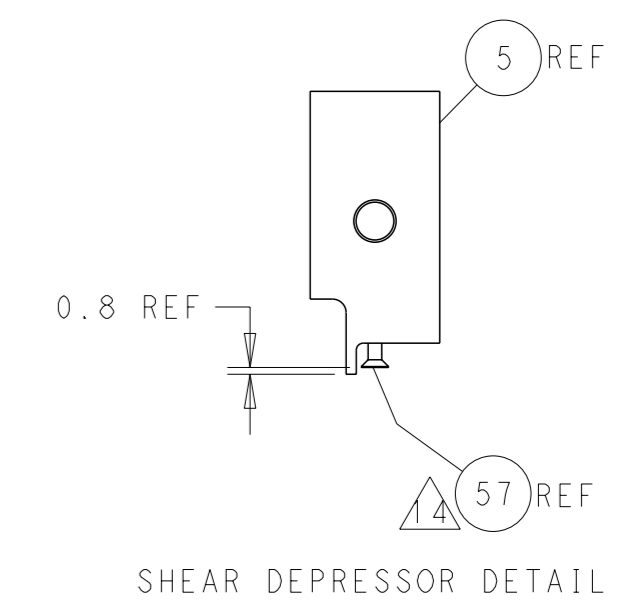
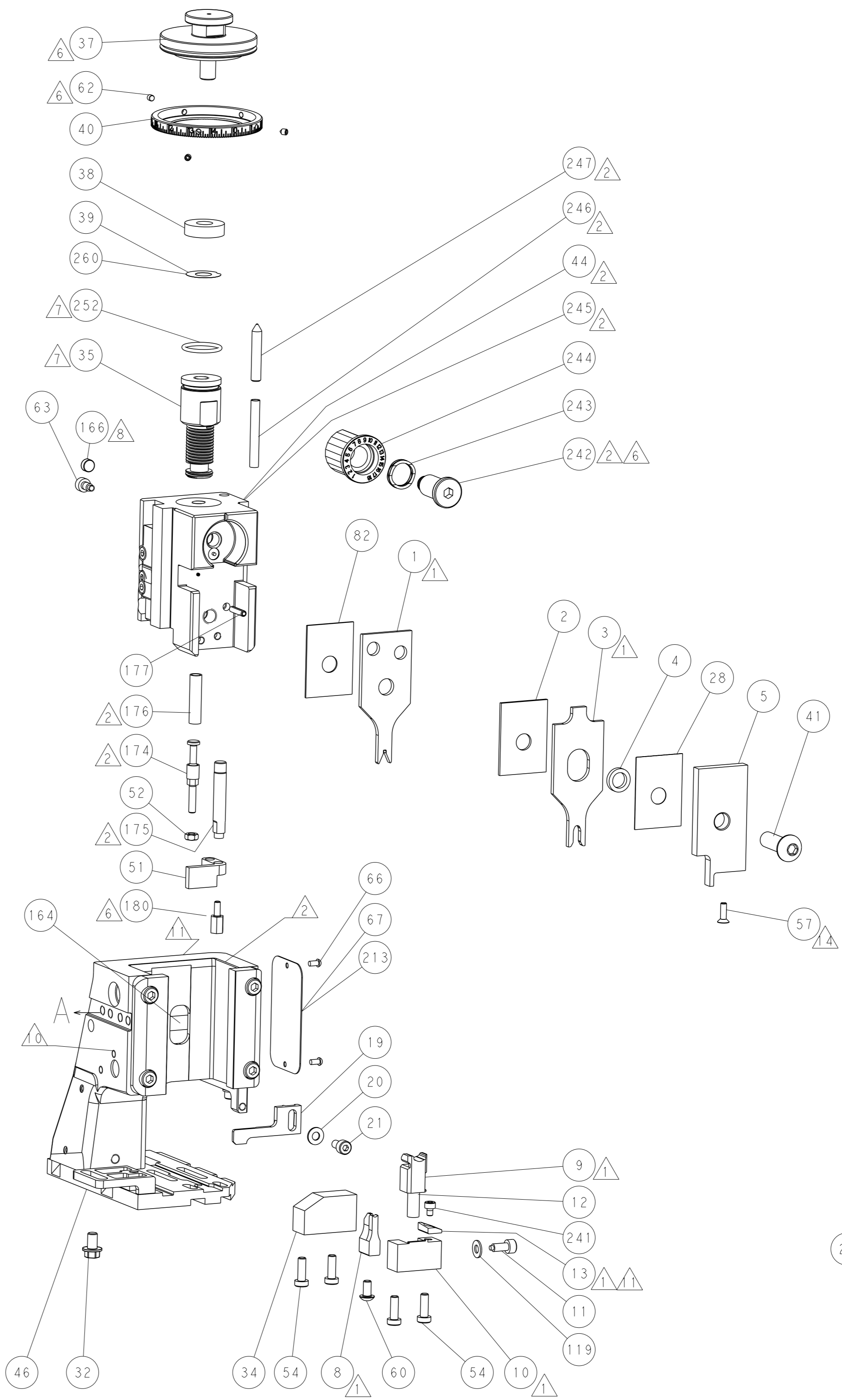
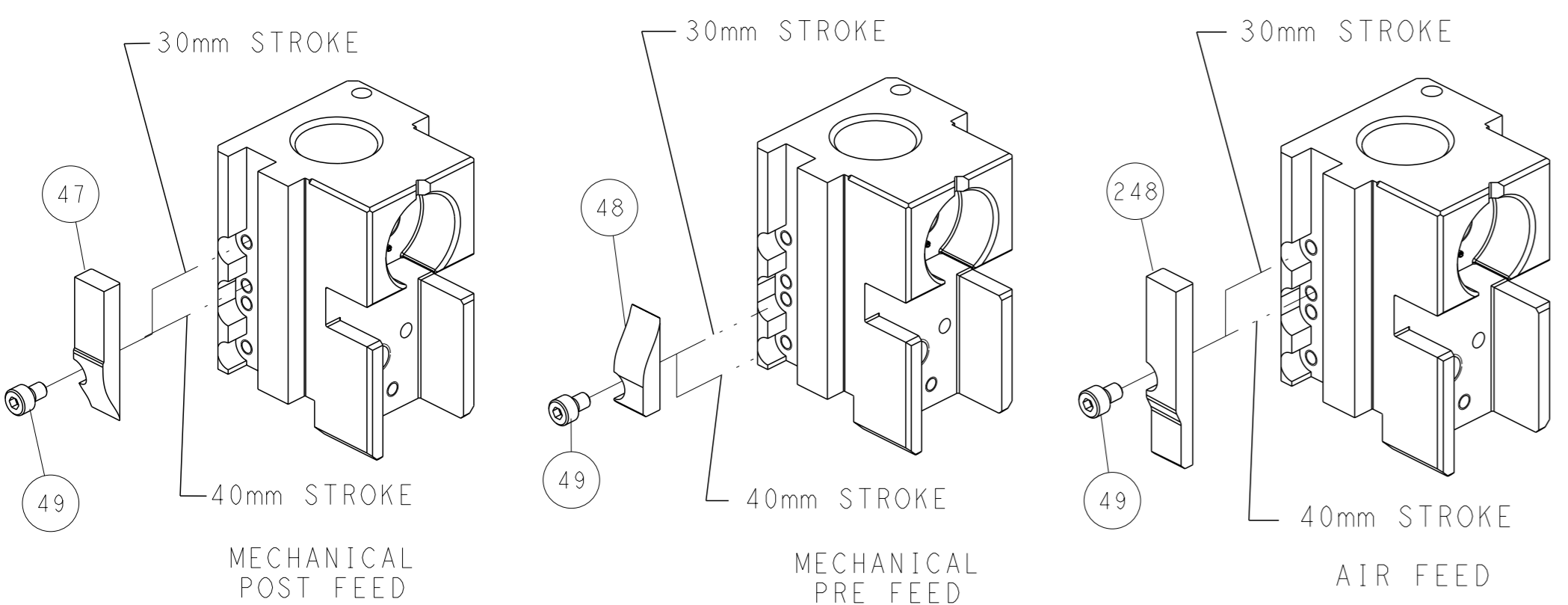
PNEUMATIC



SERVO LATCH PLATE



CAM POSITIONS



ATLANTIC VERSION
 Shown on sheets 1 of 4 & 2 of 4
 (Pacific version shown on sheets 3 of 4 & 4 of 4)

DIMENSIONS: mm 		TOLERANCES UNLESS OTHERWISE SPECIFIED: 0 PLC ± 1 PLC ± 2 PLC ± 3 PLC ± 4 PLC ± ANGLES ° ±		OWN X_ZHAO 14MAR2013 CHK L_ZHANG 14MAR2013 APVD L_ZHANG 14MAR2013 PRODUCT SPEC APPLICATION SPEC WEIGHT Customer Accessible Production Drawing		NAME Ocean Side Feed Applicator SIZE A1 CAGE CODE 00779 DRAWING NO. ©=2151518 SCALE 1:2 SHEET 2 of 4 REV B		TE Connectivity Harrisburg, PA 17105-3608 RESTRICTED TO	
-----------------------	--	---	--	---	--	--	--	---	--

APPLICATOR STYLE CONVERSION CHART. Table with columns for CONVERT TO, PART NUMBERS REQUIRED, and descriptions like PNEUMATIC FEED, SERVO LATCH PLATE, MECHANICAL FEED, etc.

APPLICATOR DATA. Table with columns for CRIMP, WIRE, INSUL, APPLICATOR INSTRUCTIONS, and SIZE, TYPE.

TERMINAL DATA: TE TERMINAL, TE CRIMP SPECIFICATION. Table with columns for WIRE STRIP LENGTH, INSULATION DIAMETER RANGE, and TERMINALS APPLIED.

WIRE SIZE, CRIMP HEIGHT mm [INCH], CRIMP HEIGHT REFERENCE SETTING. Table with columns for WIRE SIZE, CRIMP HEIGHT, and CRIMP HEIGHT REFERENCE SETTING.

- RECOMMENDED SPARE PARTS
GREASE BEARING SURFACES LIGHTLY
LUBRICATE DAILY PER THE APPLICATOR INSTRUCTION SHEET SUPPLIED WITH THE APPLICATOR.
APPLICATOR SPECIFIC DATA TO BE ENTERED INTO BLANK MEMORY CHIP AT ASSEMBLY. SEE BELOW FOR PART NUMBER: MECHANICAL FEED WITH "SMART APPLICATOR" CONVERSION: 8-2151518-4 PNEUMATIC FEED WITH "SMART APPLICATOR" CONVERSION: 8-2151518-4 SERVO FEED WITH "FINE CRIMP HEIGHT ADJUST": 8-2151518-5
ADJUSTMENT OF THE STRIPPER MAY BE REQUIRED WHEN MOVING THE APPLICATOR BETWEEN BENCH AND LEADMAKER APPLICATIONS.
APPLY PART NUMBER 1-23419-5 LOCTITE TO THREADS OF ITEMS 62, 180. APPLY PART NUMBER 2-23419-6 LOCTITE TO THREADS OF ITEMS 242.
GREASE THREADS, GROOVE AND O-RING ON ITEMS 139 & 152.
MAGNET MUST BE ORIENTED CORRECTLY IN ORDER TO PROPERLY ACTUATE THE COUNTER.
CRIMP HEIGHT REFERENCE SETTING WAS THE SETTING USED WHEN THE APPLICATOR WAS QUALIFIED AT THE FACTORY. ADJUSTMENT MAY BE NECESSARY WHEN RUNNING APPLICATOR IN THE FIELD.
SPARE FEED CAM STORAGE LOCATION REFER TO INSTRUCTION SHEET FOR ADDITIONAL INFORMATION.
TO CONVERT THE APPLICATOR TO A NON-CARRIER CUTTING STYLE, REMOVE ITEM 13 AND ATTACH TO THE LOCATION ON BACK SIDE OF THE HOUSING. REFER TO INSTRUCTION SHEET FOR ADDITIONAL INFORMATION.
THIS APPLICATOR APPLIES TERMINAL WITH A SEAL. INSULATION DIA QUOTED IS OUTSIDE DIAMETER OF SEAL. WIER INS. DIA IS DEPENDENT ON SEAL BEING APPLIED. SEAL PN 964971-1 INS. DIA RANGE IS 1.2-1.6mm.
APPLY TORO-SEAL IN ALLEN SOCKET TO FILL HOLE AFTER FLAT HD HAS BEEN ADJUSTED TO CORRECT HEIGHT AT QUALIFICATION. APPLY #1-23419-5 LOC-TITE TO THREADS.
TERMINAL LUBRICANT IS RECOMMENDED.

*WARNING
ON INSTALLATION, SET WIRE DISC, ITEM 40 TO LARGEST WIRE SIZE SETTING. USE OF SETTINGS BELOW MINIMUM REQUIRED CRIMP HEIGHT SETTING WILL CAUSE DAMAGE TO CRIMP TOOLING.

Table with columns for PART NO, DESCRIPTION, ITEM NO. Rows include: 2119782-1 FINE ADJUST HEAD ASM, PACIFIC STYLE 251; 2119640-1 PUSH ROD, AIR FEED 250; 2079988-1 BUSHING, LCH5-12, MISUMI 249; 1-22279-3 SPRING, COMPRESSION 246; 2119082-8 CAM, SNAIL, INSULATION ADJUSTMENT 244.

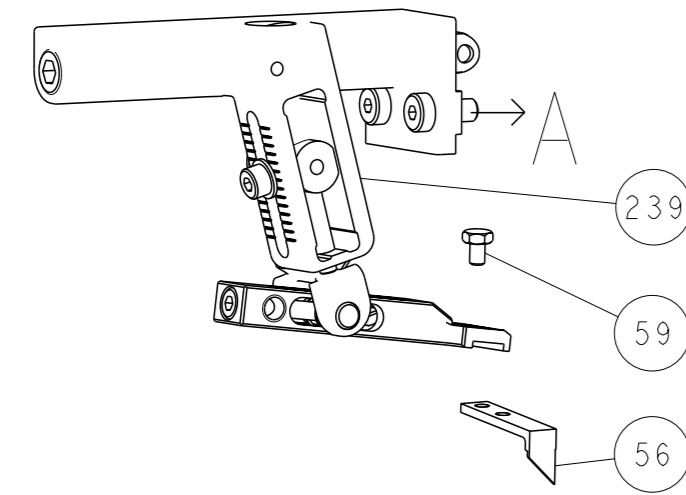
PACIFIC VERSION
Shown on sheets 3 of 4 & 4 of 4
(Atlantic version shown on sheets 1 of 4 & 2 of 4)

SET UP GAUGE LOC 66. Table with columns for P, LTR, DESCRIPTION, DATE, QTN, APVD.

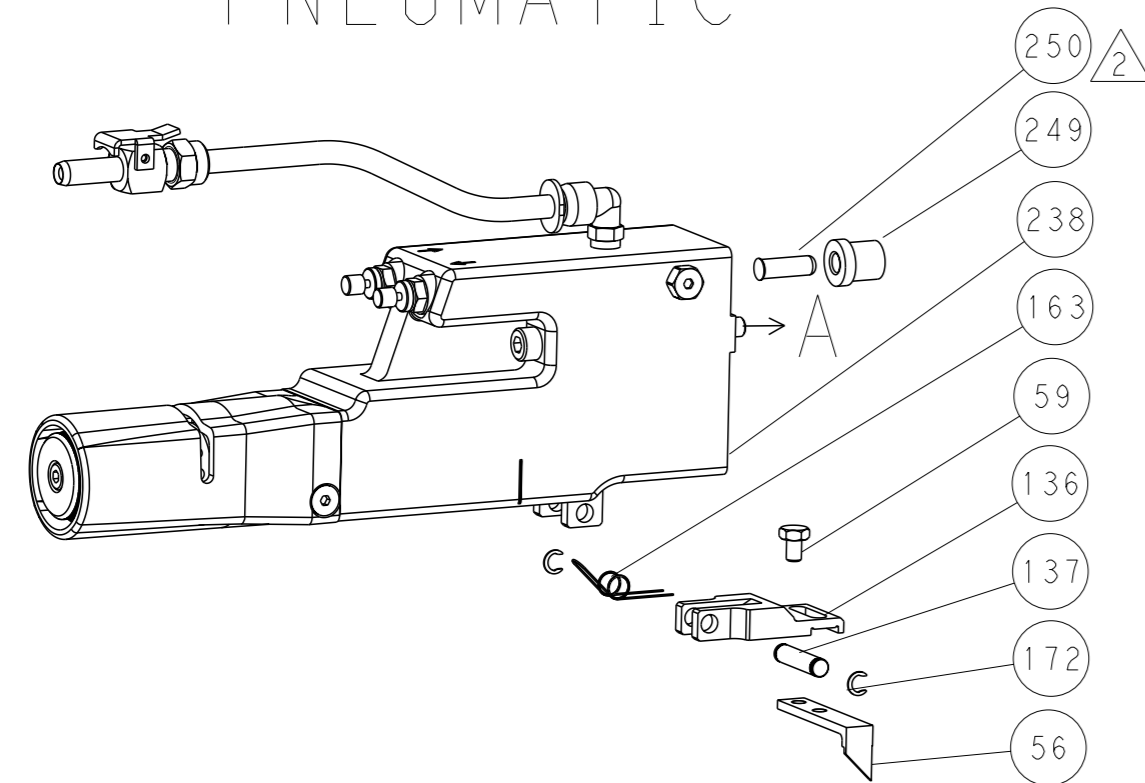
Large table with columns for P, LTR, DESCRIPTION, DATE, QTN, APVD. Rows include: 2079764-1 WASHER, WAVE SPRING, CREST-TO-CREST 243; 2119083-1 RETAINER, INSULATION DIAL 242; 7-18023-7 SCR, SKT HD CAP M3 X 4.0 241; 2168400-6 SHCS, LOW HEAD, RoHS, M5 X 16 240; 2119580-1 MECHANICAL FEED ASSEMBLY 239; 2063440-1 AIR FEED MODULE 238; 2119740-2 TAG, IDENTIFICATION 213; 1901094-3 SPACER, FEEDER 198; 1-1752354-9 STANDOFF, HOLD-DOWN 180; 6-993111-6 PIN, SLOTTED SPRING 3.0 X 14.0 177; 8-22280-7 SPRING, COMPRESSION 176; 1752353-2 GUIDE PIN, HOLDDOWN 175; 1901680-2 GUIDE PIN, HOLDDOWN 174; 21045-3 RING, RETAIN, EXTERN, 3/16 CRESCENT 172; 994969-1 MAGNET, RARE EARTH HIGH ENERGY 166; 994970-2 COUNTER, MAGNETIC 164; 240638-1 SPRING, FEED FINGER 163; 8-21084-1 O-RING, .801 ID, .070 DIA, MAT. 152; 2119641-2 FEED CAM, AIR FEED 151; 2119798-2 DETENT PIN 145; 2079383-8 SCR, BHSC, RoHS (M4 X 16) 144; 2168400-5 SHCS, LOW HEAD, RoHS, M4 X 20 143; 2119653-2 FEED CAM, POST FEED 142; 1-2119656-0 APPLICATOR BASIC ASSEMBLY, SF 141; 2119650-1 RAM, ASIAN STYLE, SIDE FEED 140; 2119092-2 BOLT, ADJUSTMENT 139; 3-23627-7 PIN, RETAIN, GRVD, 3/16 X .854 137; 2119799-1 HOLDER, FEED FINGER, AF 136; SEE NOTE 4 MEMORY CHIP, PROGRAMMED 135; 1633743-1 SERVO FEED LATCH ASM 133; 1-18028-2 WASHER, FLAT, REG M4 119; 2119944-1 FEED FINGER ASSEMBLY, SF 117; 2119955-1 ASSY, LUBRICATOR, SIDE FEED 113; 455888-7 SPACER, CRIMPER 82; 2119956-1 DOCUMENTATION PACKAGE 71; 2119740-1 TAG, IDENTIFICATION 67; 2168078-1 SCREW, DRIVE, RH, RoHS, 2 x .188 66; 2119793-1 LIMITER, ADJUSTMENT BOLT 63; 992763-5 SCR, SET, SOC, CONE POINT, M3 x 4.0 62; 5-18022-5 SCR, HEX HD CAP, M4 X 6.0 59; 985575-3 SCR, FLT SKT HD CAP M3 X 10.0 57; 1338685-1 PAWL, FEED 56; 1-5018030-0 NUT, HEX, REG, RoHS, M3.5 52; 1901681-5 HOLDDOWN, TERMINAL 51; 18023-9 SCR, SKT HD CAP M4 X 6.0 49; 2119652-1 FEED CAM, PRE FEED 48; 2079383-7 SCR, BHSC, RoHS (M8 X 25) 41; 2119645-1 DISC, NUMBERED FA WIRE ADJUSTMENT 40; 2119957-1 APPLICATOR SHIM PACK 39; 2119644-1 RAM WASHER, PRECISION 38; 1752356-6 SUPPORT, TERMINAL 34; 2079383-5 SCR, BHSC, RoHS (M4 X 20) 33; 2161328-1 HEX HEAD, FLANGED, M5 x 8mm LONG 32; 1-1320908-0 SPACER, STRIP GUIDE 30; 2119959-1 ASSEMBLY, STRIP GUIDE 29; 455888-3 SPACER, CRIMPER 28; 1320928-2 STRIP GUIDE 24; 2168083-2 SCR, SKT HD CAP, RoHS, M4 X 8.0 21; 1-18028-2 WASHER, FLAT, REG M4 20; 2119533-1 STRIPPER, SIDE FEED 19; 2119806-1 INSERT, SHEAR 13; 3-22280-3 SPRING, COMPRESSION 12; 1-356885-4 STOP, SHEAR 11; 2119805-1 SHEAR HOLDER, FRONT 10; 318707-1 FLOATING SHEAR, FRONT 9; 1333332-1 ANVIL, COMBINATION, SPECIAL 8; 7 7; 6 6; 2119781-1 DEPRESSOR, SHEAR 5; 238011-4 BLOCK, CRIMPER SPACER 4; 2-1633996-7 CRIMPER, INSULATION SPECIAL 3; 1-455888-3 SPACER, CRIMPER 2; 5-1633860-6 CRIMPER, WIRE 1; -77 -27 -25 -22 -21 PART NO DESCRIPTION ITEM NO.

LOC	DIST	REVISIONS			
A	66	REV	DATE	OWN	APVD
-	SEE SHEET 1	-	-	-	-

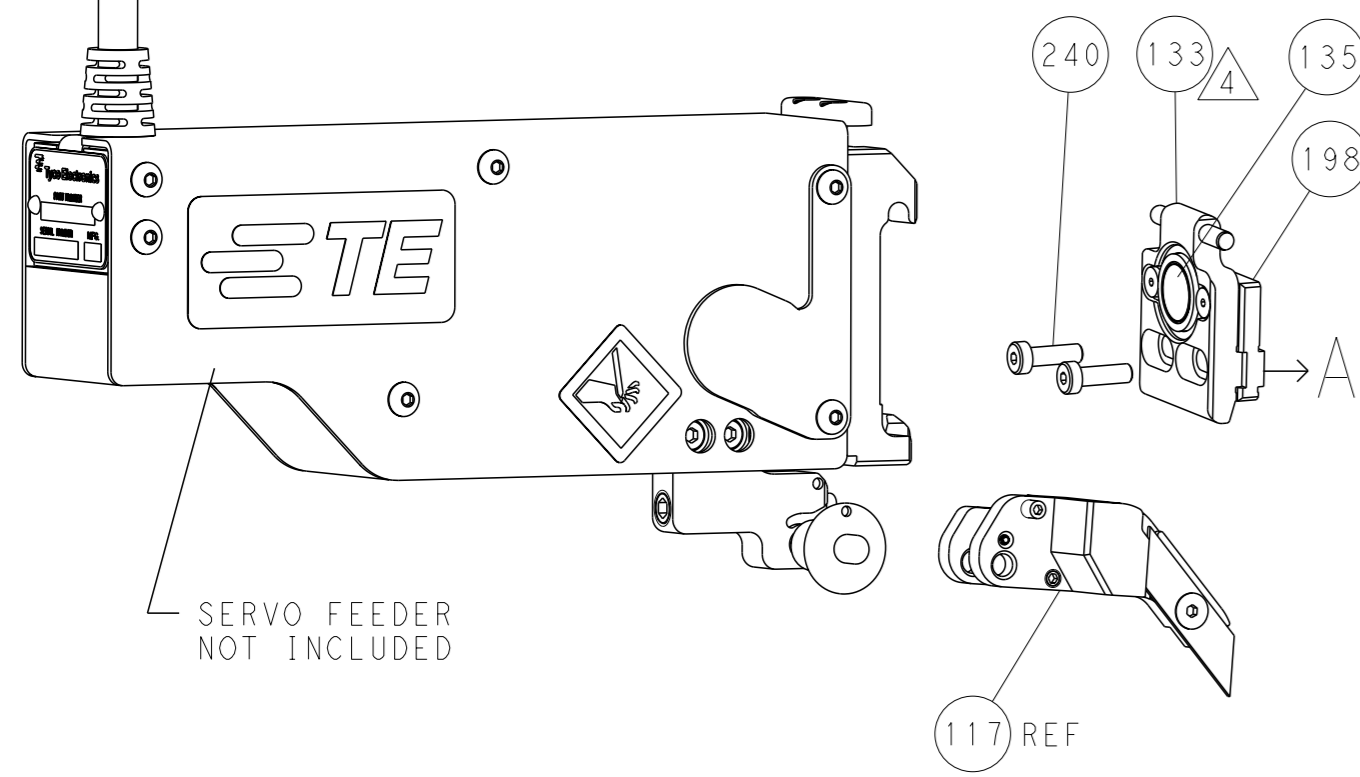
FEED TYPE MECHANICAL



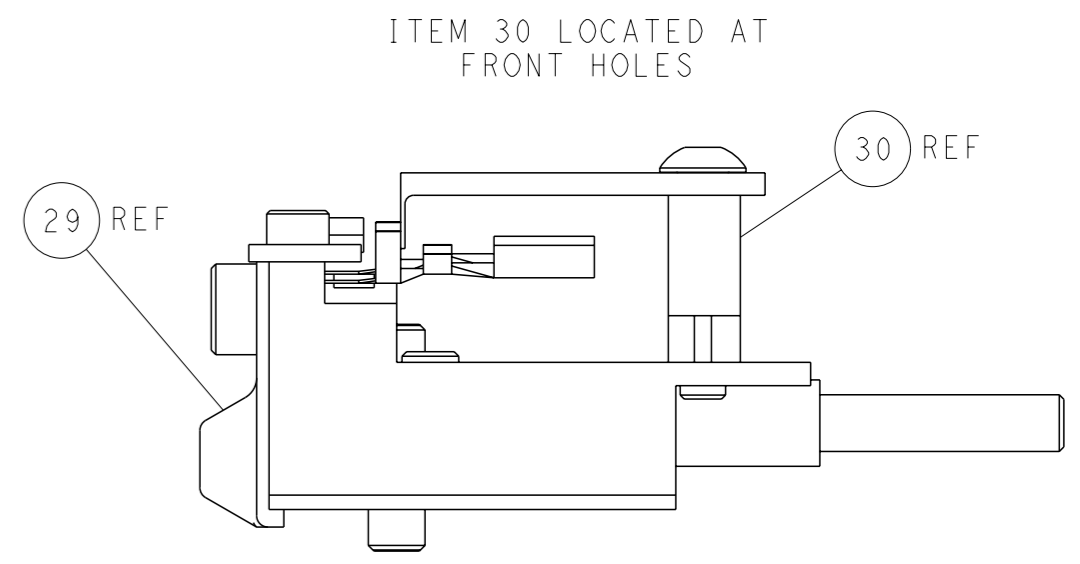
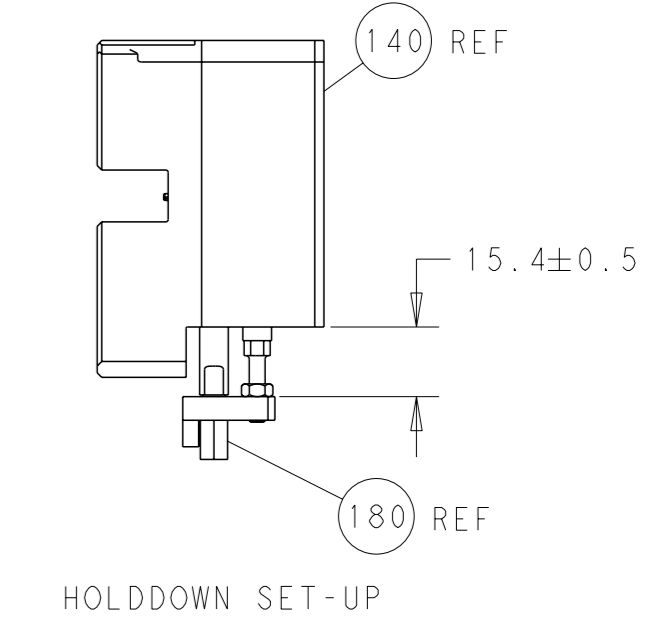
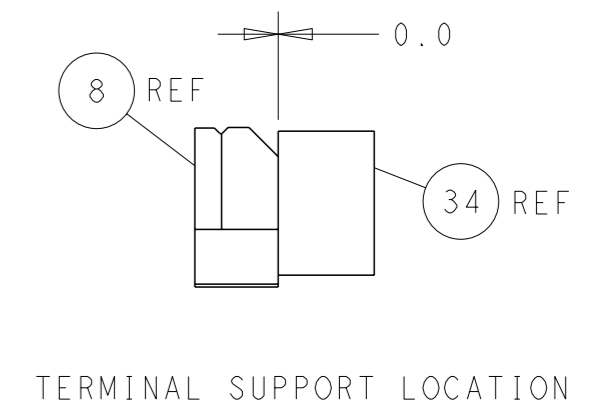
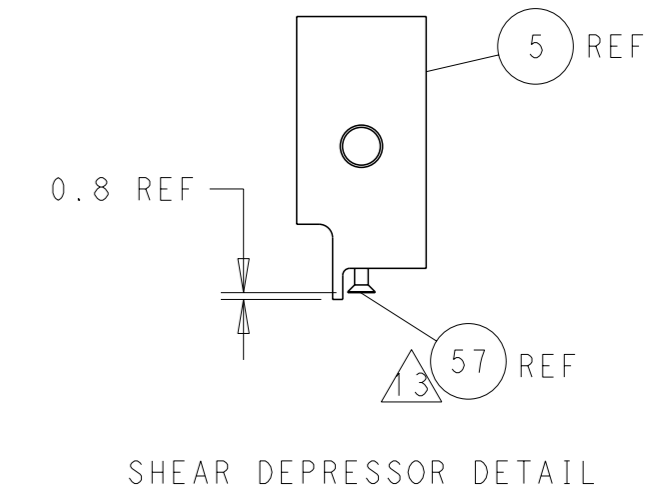
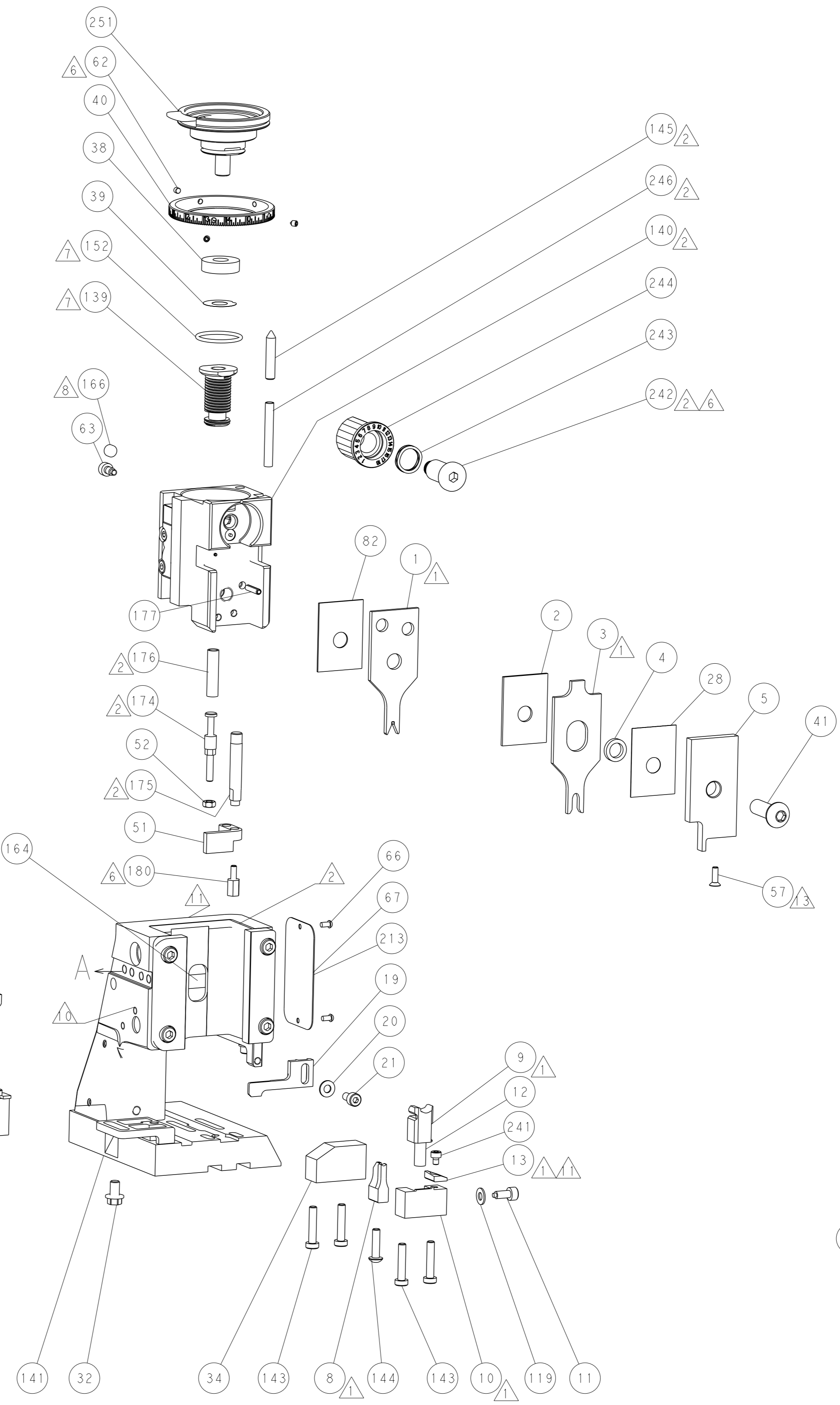
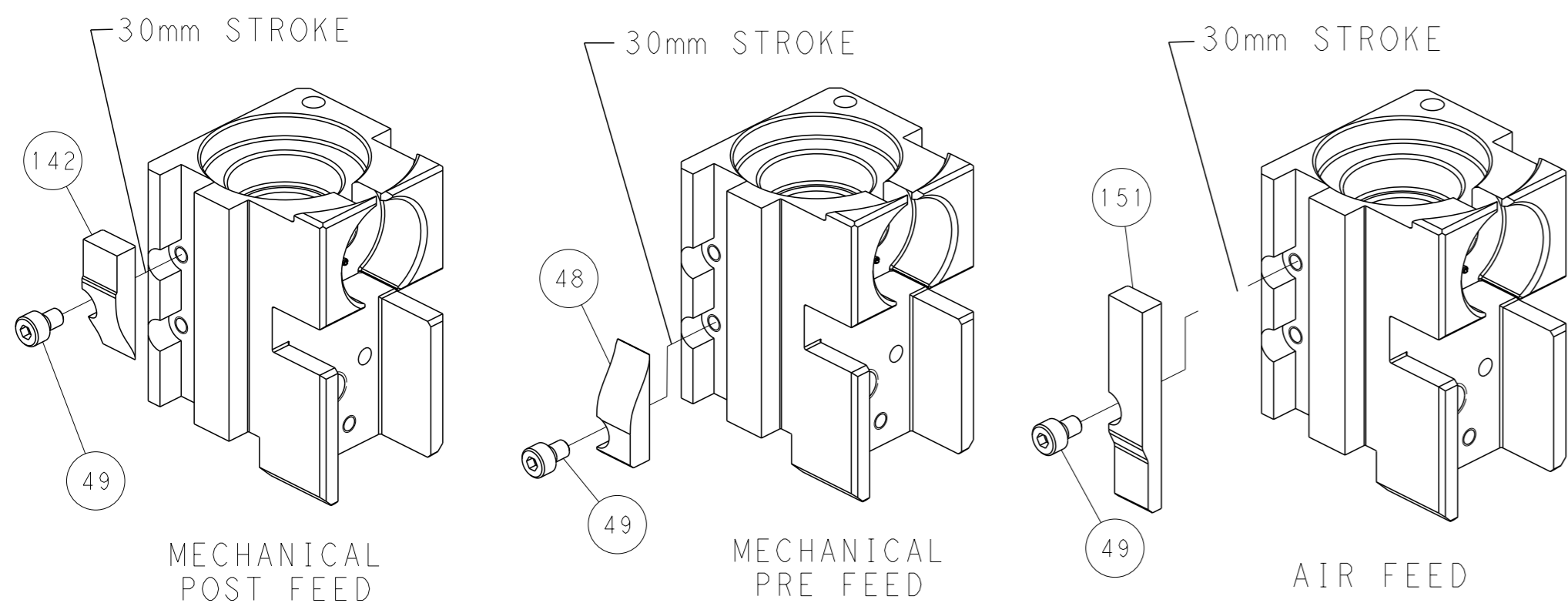
PNEUMATIC



SERVO LATCH PLATE



CAM POSITIONS



PACIFIC VERSION
 Shown on sheets 3 of 4 & 4 of 4
 (Atlantic version shown on sheets 1 of 4 & 2 of 4)

<small>THIS DRAWING IS A CONTROLLED DOCUMENT FOR TYCO ELECTRONICS CORPORATION. IT IS SUBJECT TO CHANGE AND THE CONTROLLING ENGINEERING ORGANIZATION SHOULD BE CONTACTED FOR THE LATEST REVISION.</small>		OWN: X. ZHAO 14MAR2013 CHK: L. ZHANG 14MAR2013 APVD: L. ZHANG 14MAR2013	TE Connectivity Harrisburg, PA 17105-3608
DIMENSIONS: mm TOLERANCES UNLESS OTHERWISE SPECIFIED: 0 PLC ± 1 PLC ± 2 PLC ± 3 PLC ± 4 PLC ± ANGLES FINISH *		NAME: Ocean Side Feed Applicator SIZE: A1 CAGE CODE: 00779 DRAWING NO: C=2151518	RESTRICTED TO: B
MATERIAL:		WEIGHT:	SCALE: 1:2 SHEET: 4 of 4 REV: B