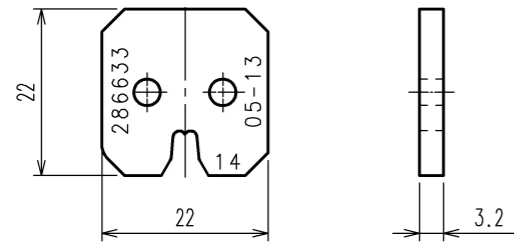


DRAWING FOR REFERENCE: This is subject to change without notice 2016/10/24 23:58:03 (JST) Racheille Sheffer

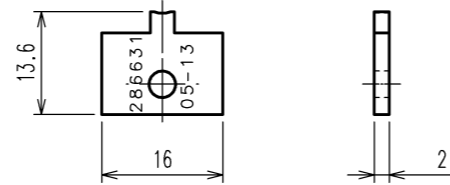
1 2 3 4 5 6 7 8

A B C D E F

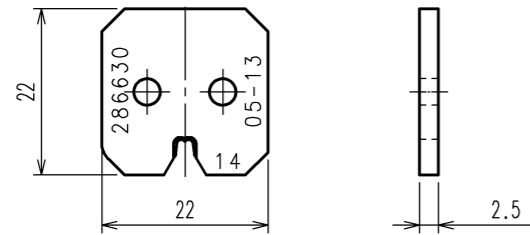
INSULATION CRIMPER



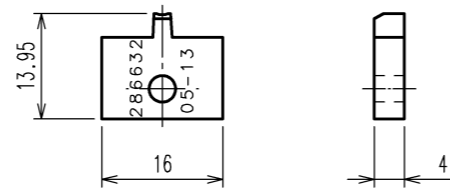
INSULATION ANVIL



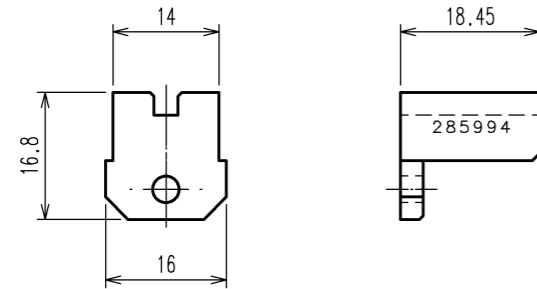
WIRE CRIMPER



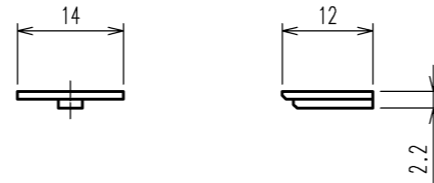
WIRE ANVIL



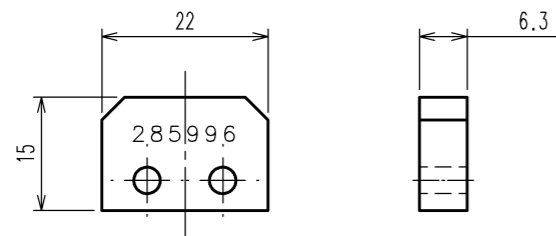
CONTACT HOLDER A



CONTACT HOLDER C



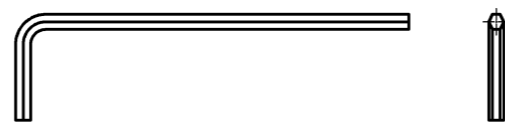
CRIMPER SPACER



SCREW(M2×5) : TWO



HEXAGON WRENCH(M2)



COUNT	DESCRIPTION OF REVISIONS	BY	CHKD	DATE	COUNT	DESCRIPTION OF REVISIONS	BY	CHKD	DATE
△				..	△				..
△				..	△				..
△				..	△				..

Notes 1.This drawing shows PQ50A-14(2517) (CL0250-1022-1).

2.The following table shows the specification of this unit.

INSULATION CRIMPER	ONE
WIRE CRIMPER	ONE
INSULATION ANVIL	ONE
WIRE ANVIL	ONE
CONTACT HOLDER A	ONE
CONTACT HOLDER C	ONE
CRIMPER SPACER	ONE
SCREW(M2×5)	TWO
HEXAGON WRENCH(M2)	ONE

TO  
PE

2			4		
1			3		
NO.	MATERIAL	FINISH, REMARKS	NO.	MATERIAL	FINISH, REMARKS
CODE NO.(OLD) CL		DRAWN H.KUDO 13.5.20	DESIGNED M.TAKAHASHI 13.5.20	CHECKED S.OIZUMI 13.5.20	APPROVED T.IITO 13.5.20
DRAWING NO. EDC3-276377		PART NO. PQ50A-14(2517)			
SCALE 1 : 1		CODE NO. CL250-1022-1		1/1	
UNITS mm		HRS HIROSE ELECTRIC CO., LTD			

1 2 3 4 5 6 7 8

F